

Microchilus subquadratus Ormerod, *sp. nov.*

TYPE: PANAMA. Darien: Serrania del Darien, track from Cerro Mali to Rio Pucuro base camp, 20 July 1976, A. Gentry, H. Leon & L. Forero 16834 (Holotype: MO). Fig. 30.

Affinis M. maasii Ormerod *sed columna floribus brevioribus* (2.7–3.1 vs. 3.40–3.85 mm) *et hypochilo labello subtrilobatis* (non *integrus*) *differt*.

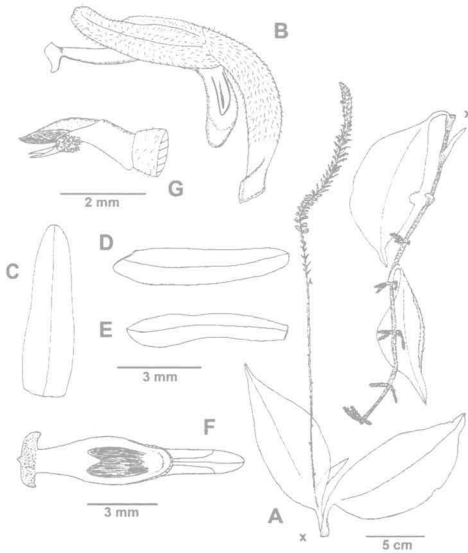
Terrestrial herb. Rhizome and lower part of stem not preserved. Stem fragment terete, 4-leaved, 4.6 × 0.4–0.5 cm; internodes 1.3–1.8 cm long. Leaves obliquely ovate-elliptic to elliptic, acute, 8.7–15.5 × 3.75–7.55 cm; petiole and sheath 2–3 cm long. Inflorescence pubescent, 34.5 cm long; peduncle 12.8 cm long; sheathing bracts ca. 15, some upper ones may be sterile floral bracts, lax, 1.10–3.35 cm long; rachis densely many-flowered, 21.7 cm long; floral bracts damaged, but possibly ovate-lanceolate, acute, perhaps to 1.1 × 0.5 cm. Pedicellate ovary cylindrical-fusiform, pubescent, 6 mm long. Flowers externally pubescent, white. Dorsal sepal ovate-oblong, obtuse, 5.5 × 1.6 mm. Lateral sepals obliquely oblong, obtuse, 5.5 × 1.5 mm. Petals subligulate in lower half, becoming obliquely oblong-elliptic in upper half, obtuse, 4.75 × 1.35–1.40 mm. Labellum spurred, trilobed, joined to column for 1 mm; spur oblongoid, obtuse, 4 mm long; hypochile subtrilobate, lower two-thirds subquadrate, upper third cuneate, 7-veined, 3 mm long, 2 mm wide basally, upper third 1.30–1.15 mm wide; epichile 0.95 × 3.15 mm, lobules obovate-elliptic, 1.3 × 1.0 mm. Column 2.7 mm long to tips of brachia, 3.1 mm long to tips of pollinia.

Distribution: Panama.

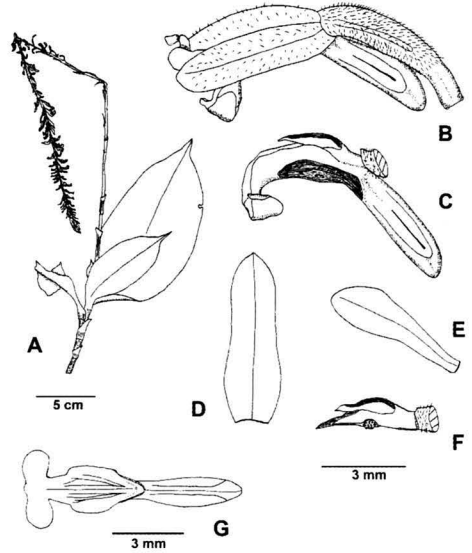
Habitat: Tropical premontane wet forest, altitude not recorded.

This species is similar to *M. maasii* Ormerod but it has smaller flowers (sepals to 5.5 mm long), a labellum with a subtrilobed hypochile and a shorter column (2.7–3.1 mm long). In *M. maasii* the flowers are larger (sepals 6.0–8.5 mm long), the labellum has entire hypochile and the column is longer (3.40–3.85 mm long).

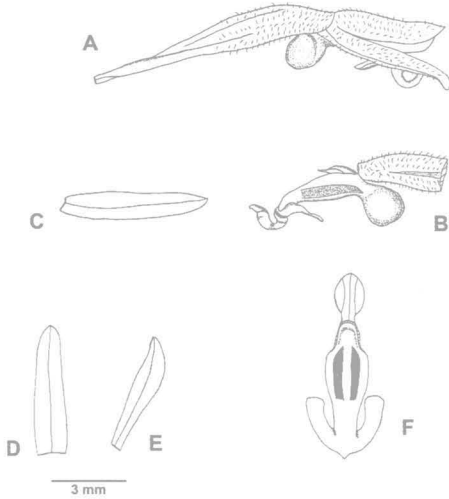
29



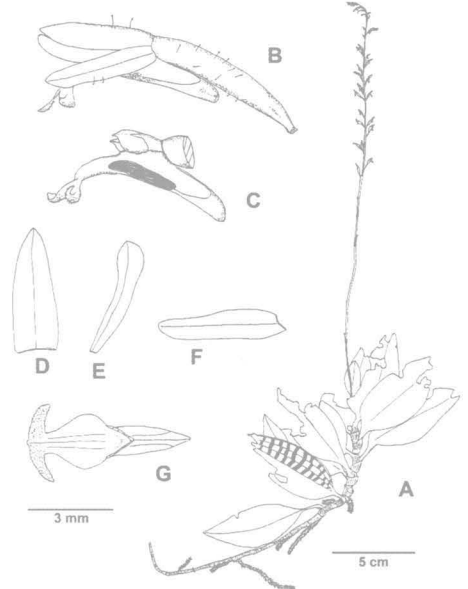
30



31



32



FIGURES 29–32. *Microchilus* species. **29**, *M. puyoensis* var. *brevipedunculatus*. A, plant; B, flower; C, dorsal sepal; D, lateral sepal; E, petal; F, labellum and spur; G, column (drawn from holotype). **30**, *M. subquadratus*. A, plant; B, flower; C, flower minus tepals; D, dorsal sepal; E, petal; F, labellum and spur (drawn from holotype). **31**, *M. tequendamae*. A, flower; B, flower minus tepals; C, lateral sepal; D, dorsal sepal; E, petal; F, labellum and spur (drawn from holotype). **32**, *M. tessellatus*. A, plant; B, flower; C, flower minus tepals; D, dorsal sepal; E, petal; F, lateral sepal; G, labellum and spur (drawn from holotype).